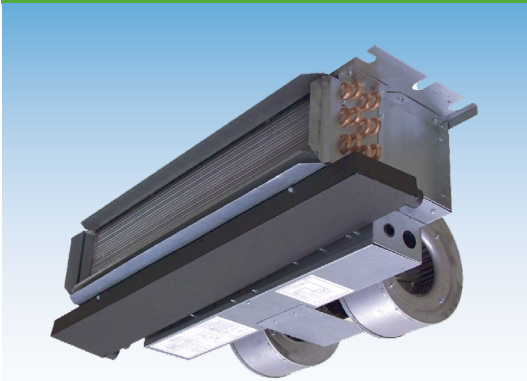


PAS/T SERIES CEILING MOUNT

CASED & UNCASD ELECTRIC HEAT DX COOL AIR HANDLER



Representative image only. Some models may vary in appearance.

APPLICATION VERSATILITY

Built in mounting tabs for ceiling or fur-down mounting. Louvered ceiling access panel has separate frame that attaches to ceiling joists. Solid access panel available for use with end return installations. Compatible with most brands of air conditioners or heat pumps. Field convertible front and bottom return. Wall hanging bracket included standard.

- A2L refrigerants require a Refrigerant Detection System (RDS) for compliance. In accordance to UL 60335 Refrigerant Detection Systems are factory-installed on A2L refrigerant ready air handlers.
- ETL listed for R22 and 410A. ETL listed for R454B and R32 with (RDS) Refrigerant Detection System.

MOTOR

Direct drive multi-speed blowers circulate air quietly and efficiently. Two speed motors allow for precise air volume selection. Motor speeds can be easily selected via motor terminals. Blowers mounted on plate so they can be easily removed for service.

ELECTRONIC CONTROL BOARD

Electronic circuit board provides 30 secs ON/OFF blower time delay extracting more heat/cool from the coil.

ELECTRIC HEAT KITS

Heat kits available in 3, 5, 6, 8, & 10 KW. Models with electric heat include sequencers and temperature limit switches for safe, efficient operation. Easily accessible controls for quick service.

LOW LEAKAGE CABINET

Less than 2% air leakage from cabinet when installed in enclosure and tested in accordance with ASHRAE 193.

- **PAS SERIES:** Sturdy, fully insulated galvanized enclosure with ducted return available as option.
- **PAT SERIES:** Sturdy, fully insulated galvanized steel cabinet with knockout for duct return.

DIRECT EXPANSION COIL

High efficiency rifled copper tubes/enhanced aluminum fins provide maximum heat transfer. All coils immersion tested at 500 psi, followed by nitrogen pressurization and factory sealing to ensure optimal system integrity and long-term reliability. Liquid-line Schrader allows pre-installation pressure assurance testing. Available with either orifice or TXV metering device factory installed. Field-installable bolt-on TXVs are also available. Primary & secondary condensate drain. All drain connections are 3/4" NPT. Powder-painted metal drain pan. Access door allows for coil cleaning.

PAS-PAT-SS-AH-019-A

HELPFUL LINKS



VIEW PRODUCT ONLINE

For full warranty terms and conditions, please refer to the Warranty Information section on Aspen's official website.



AHRI QUICK MATCH TOOL

Identify the correct AHRI-certified match for any Aspen coil, air handler, or Aspen PRO air handler. Available on the Resources page.



In keeping with its commitment to continuous improvement, Aspen Manufacturing reserves the right to make changes without notice and incurring obligation. To stay up-to-date with this product and Aspen's trusted line of coils, air handlers, and more, go to our website. © 2025 Aspen Manufacturing. All Rights Reserved

Customer Service: info@aspenmfg.com • Warranty Team: warranty@aspenmfg.com • Phone: 281.441.6500 • Toll Free: 800.423.9007 • Fax: 281.441.6510

PA(S/T) SERIES - HEATING/COOLING PERFORMANCE & ELECTRICAL DATA											
MODEL	PERFORMANCE DATA							ELECTRICAL DATA			
	NOM. COOL.	ELECTRIC HEAT KIT	MIN. SPEED TAP	HEATING		TOT. AMPS		MIN. CIRCUIT AMPACITY		MAX. BREAKER OR FUSE SIZE	
				KW		A		MCA2		MFU	
				208V	240V	208V	240V	208V	240V	208V	240V
PA(S/T) 23	18,000	HTS00	-	0.0	0.0	1.4	1.4	1.8	1.8	15A	15A
		HTS03	LO	2.3	3.0	12.2	13.9	15.3	17.4	20A	20A
		HTS05	LO	3.6	4.8	18.7	21.4	23.4	26.8	25A	30A
		HTS06	LO	4.5	6.0	23.0	26.4	28.8	33.0	30A	35A
		HTS08	HI	6.0	8.0	30.2	34.7	37.8	43.4	40A	45A
		HTS10	HI	7.2	9.6	36.0	41.4	45.0	51.8	45A	60A
PA(S/T) 26/27	24,000	HTS00	-	0.0	0.0	1.4	1.4	1.8	1.8	15A	15A
		HTS03	LO	2.3	3.0	12.2	13.9	15.3	17.4	20A	20A
		HTS05	LO	3.6	4.8	18.7	21.4	23.4	26.8	25A	30A
		HTS06	LO	4.5	6.0	23.0	26.4	28.8	33.0	30A	35A
		HTS08	HI	6.0	8.0	30.2	34.7	37.8	43.4	40A	45A
		HTS10	HI	7.2	9.6	36.0	41.4	45.0	51.8	45A	60A
PA(S/T) 28/29		HTM00	-	0.0	0.0	2.15	2.15	2.7	2.7	15A	15A
		HTM03	LO	2.3	3.0	13.0	14.7	16.2	18.3	20A	20A
		HTM05	LO	3.6	4.8	19.5	22.2	24.3	27.7	25A	30A
		HTM06	LO	4.5	6.0	23.8	27.2	29.7	33.9	30A	35A
		HTM08	HI	6.0	8.0	31.0	35.5	38.7	44.4	40A	45A
		HTM10	HI	7.2	9.6	36.8	42.2	46.0	52.7	50A	60A
PA(S/T) 31/34/35	30,000	HTM00	-	0.0	0.0	2.15	2.15	2.7	2.7	15A	15A
		HTM03	LO	2.3	3.0	13.0	14.7	16.2	18.3	20A	20A
		HTM05	LO	3.6	4.8	19.5	22.2	24.3	27.7	25A	30A
		HTM06	LO	4.5	6.0	23.8	27.2	29.7	33.9	30A	35A
		HTM08	HI	6.0	8.0	31.0	35.5	38.7	44.4	40A	45A
		HTM10	HI	7.2	9.6	36.8	42.2	46.0	52.7	50A	60A
PA(S/T) 38	36,000	HTM00	-	0.0	0.0	2.15	2.15	2.7	2.7	15A	15A
		HTM03	LO	2.3	3.0	13.0	14.7	16.2	18.3	20A	20A
		HTM05	LO	3.6	4.8	19.5	22.2	24.3	27.7	25A	30A
		HTM06	LO	4.5	6.0	23.8	27.2	29.7	33.9	30A	35A
		HTM08	HI	6.0	8.0	31.0	35.5	38.7	44.4	40A	45A
		HTM10	HI	7.2	9.6	36.8	42.2	46.0	52.7	50A	60A

PA(S/T) SERIES - BLOWER DATA													
MODEL	SPEED TAP	MOTOR			CFM VS. EXTERNAL STATIC (DRY COIL)								
		HP	FLA	VOLT	0.1	0.2	0.3	0.4	0.5	0.6	0.7	0.8	0.9
PA(S/T) 18/19/24	HIGH	1/4	1.4	240	895	840	780	715	645	540	430	210	190
	LOW	1/4	1.4	240	750	705	660	610	535	400	320	150	-
PA(S/T) 20/25	HIGH	1/4	1.4	240	1015	955	890	830	755	665	550	325	260
	LOW	1/4	1.4	240	785	740	700	650	590	505	350	260	100
PA(S/T) 26/31/26	HIGH	1/3	2.15	240	1035	965	890	810	720	520	445	-	-
	LOW	1/3	2.15	240	875	810	740	670	580	460	-	-	-
PA(S/T) 28/32/37	HIGH	1/3	2.15	240	1155	1075	1010	930	850	765	675	340	340
	LOW	1/3	2.15	240	960	900	840	770	700	615	500	210	105
PA(S/T) 30	HIGH	1/3	2.15	240	1130	1055	985	915	835	750	645	515	345
	LOW	1/3	2.15	240	930	875	820	760	700	620	520	370	115

In keeping with its commitment to continuous improvement, Aspen Manufacturing reserves the right to make changes without notice and incurring obligation. To stay up-to-date with this product and Aspen's trusted line of coils, air handlers, and more, go to our website. © 2025 Aspen Manufacturing. All Rights Reserved

Customer Service: info@aspenmfg.com Warranty Team: warranty@aspenmfg.com Phone: 281.441.6500 Toll Free: 800.423.9007 Fax: 281.441.6510

ELECTRIC HEAT NOMENCLATURE

HEAT KIT SERIES	POWER CONNECTION	CABINET SIZE & NOM. TON.	HEAT STRIP
H	T	S	10
ELECTRIC HEAT	T = TERMINAL BLOCK	M = MEDIUM CABINET (18-37) S = SMALL CABINET (18-37)	00 = 0 KW 06 = 6 KW 03 = 3 KW 08 = 8 KW 05 = 5 KW 10 = 10 KW

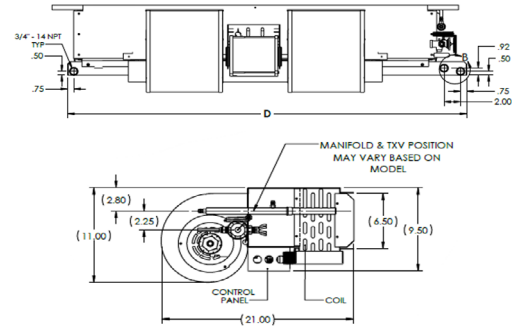
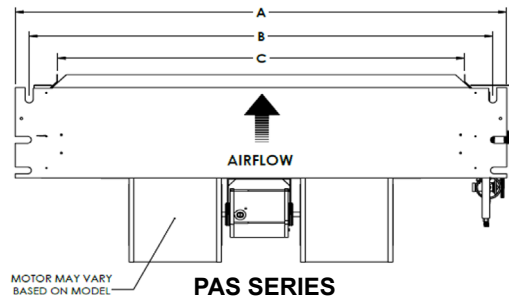
PA(S/T) AIR HANDLER CHASSIS NOMENCLATURE

BRAND	VOLTAGE	CONFIGUR.	NOM. TON.	METERING DEVICE	OPTION CODE
P	A	S/T	23	4/J	-000
ASPEN PRO	240V PSC MOTOR ELECTRIC AIR HANDLER	S = Uncased T = Cased	NOMINAL TONNAGE (MBTUH)	R410A + R22	OPTION CODE
				4 = R410A (TXV NON-BLEED AC OR HP) X = R22 (TXV NON-BLEED AC OR HP)	
				G = R410A (PISTON) B = R22 (TXV 20% BLEED AC OR HP)	
				F = R22 (PISTON)	
				R454B + R32	
				J = R454B (TXV NON-BLEED AC OR HP) D = R32 (TXV NON-BLEED AC OR HP)	
				K = R454B (TXV 20% BLEED AC OR HP) M = R32 (PISTON)	
				N = R454B (PISTON)	

PAS SERIES - CHASSIS DIMENSIONS (In.) - FIGURE 1

ASPENPRO MODEL	A	B	C	D	WEIGHT (LBS)	SKID QTY
PAS 23/26	37-1/4 [946]	34-5/8 [879]	42 [1060]	36.375 [924]	85	8
PAS 27/31	43-1/4 [1099]	40-5/8 [1032]	36 [914]	42-5/8 [1083]	90	
PAS 28/29/34	49-1/4 [1251]	46-5/8 [1184]	42 [1060]	52 [1321]	100	
PAS 33/35/38	56-1/4 [1429]	53-5/8 [1362]	48 [1219]	54 [1372]	110	

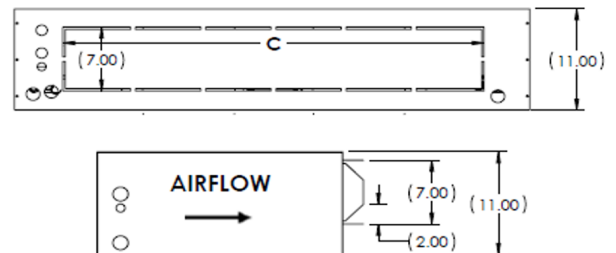
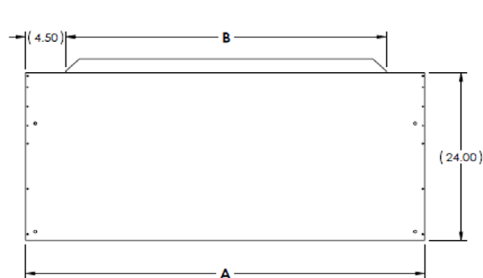
FIGURE 1



PAT SERIES - ENCLOSURE DIMENSIONS (In.) - FIGURE 2

ASPENPRO MODEL	A	B	C	WEIGHT (LBS)	SKID QTY
PAT 23/26	40 [1016]	30 [762]	30 [762]	125	5
PAT 27/31	46 [1168]	36 [914]	36 [914]	135	
PAT 28/29/34	52 [1321]	42 [1067]	42 [1067]	145	
PAT 33/35/38	60 [1524]	48 [1219]	48 [1219]	155	

FIGURE 2



In keeping with its commitment to continuous improvement, Aspen Manufacturing reserves the right to make changes without notice and incurring obligation. To stay up-to-date with this product and Aspen's trusted line of coils, air handlers, and more, go to our website. © 2025 Aspen Manufacturing. All Rights Reserved

ACCESS DOOR

VERSATILITY

Equipped with hidden frame feature. Fastens to the outside wall surface and does not have to perfectly match the hole opening. Frame screws are not visible after installation. Available in either solid (S) or Louvered (L) style.

MATERIALS

Galvanized steel construction with smooth powder paint finish.

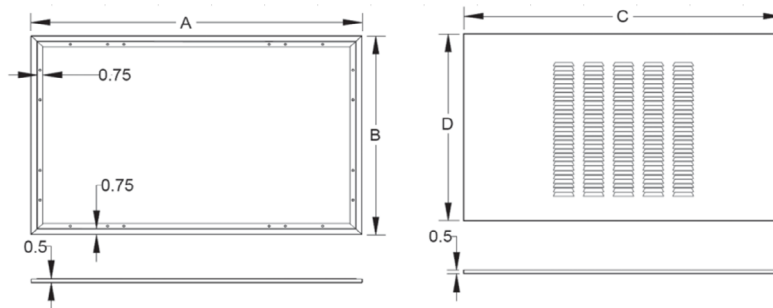
FILTER

20" x 20" x 1" field supplied.

PA(S/T) - ACCESS DOOR DIMENSIONS (In.) - FIGURE 3

PANEL MODEL	FOR USE WITH	PAT ACCESS DOOR AND FRAME				FILTERS (QTY)
		A	B	C	D	
PA(S/T)23/26	GAD-1(S/L)	43-1/2	27-1/2	41-1/2	26	1
PA(S/T)27	GAD-5(S/L)	49-1/2		47-1/2		2
PA(S/T)28/29/34	GAD-2(S/L)	55-1/2		53-1/2		2
PA(S/T)33/35/38	GAD-6(S/L)	63-1/2		61-1/2		2

FIGURE 3



PAT SERIES - CAP KIT PART NUMBER (In.)

ASPENPRO MODEL	PART NUMBER	ENCLOSURE SIZE
PAT23	CAP-1	40X24X11
PAT27/31	CAP-2	46X24X11
PAT29/34	CAP-3	52X24X11
PAT36/38	CAP-4	60X24X11

NOTE: CAP kit is an insulated panel that covers the entire bottom opening and is utilized for optional ducted return configuration.

In keeping with its commitment to continuous improvement, Aspen Manufacturing reserves the right to make changes without notice and incurring obligation. To stay up-to-date with this product and Aspen's trusted line of coils, air handlers, and more, go to our website. © 2025 Aspen Manufacturing. All Rights Reserved

Customer Service: info@aspenmfg.com Warranty Team: warranty@aspenmfg.com Phone: 281.441.6500 Toll Free: 800.423.9007 Fax: 281.441.6510