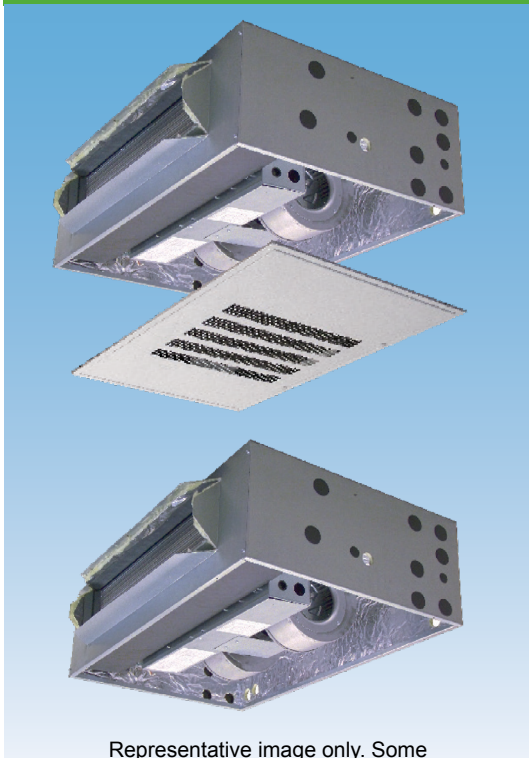


RES/T SERIES CEILING MOUNT

CASED & UNCASED ECM ELECTRIC HEAT DX COOL AIR HANDLER



Representative image only. Some models may vary in appearance.

APPLICATION VERSATILITY

Built-in mounting tabs for ceiling or fur-down mounting. Louvered ceiling access panel has separate frame that attaches to ceiling joists. Solid access panel available for use with end return installations. Compatible with most brands of air conditioners or heat pumps. Field convertible front and bottom return. Wall hanging bracket included standard.

- A2L refrigerants require a Refrigerant Detection System (RDS) for compliance. In accordance to UL 60335 Refrigerant Detection Systems are factory-installed on A2L refrigerant ready air handlers.
- ETL listed for R22 and 410A. ETL listed for R454B and R32 with (RDS) Refrigerant Detection System.

MOTOR

Constant torque ECM allows motor speed control with embedded software. Motors are pre-programmed at the factory.

ELECTRONIC CONTROL BOARD

Electronic circuit board provides 30 secs ON/OFF blower time delay extracting more heat/cool from the coil.

ELECTRIC HEAT KITS

Heat kits available in 3, 5, 6, 8, & 10 KW. Models with electric heat include sequencers and temperature limit switches for safe, efficient operation. Easily accessible controls for quick service.

LOW LEAKAGE CABINET

Less than 2% air leakage from cabinet when tested in accordance with ASHRAE standard 193. Unit must be installed according to Aspen installation instructions. Sturdy, fully insulated galvanized steel cabinet with knockout for duct return.

DIRECT EXPANSION COIL

High-efficiency rifled aluminum tubes and enhanced aluminum fins provide maximum heat transfer. All coils immersion tested at 500 psi, followed by nitrogen pressurization and factory sealing to ensure optimal system integrity and long-term reliability. Liquid-line Schrader allows pre-installation pressure assurance testing. Available with either orifice or TXV metering device, factory installed. Field-installable bolt-on TXVs is also available. Primary and secondary condensate drain. All drain connections are 3/4" NPT. Powder-painted metal drain pan. Access door allows for coil cleaning.

RES-RET-SS-AH-020

HELPFUL LINKS



VIEW PRODUCT ONLINE

For full warranty terms and conditions, please refer to the Warranty Information section on Aspen's official website.



AHRI QUICK MATCH TOOL

Identify the correct AHRI-certified match for any Aspen coil, air handler, or Aspen PRO air handler. Available on the Resources page.



In keeping with its commitment to continuous improvement, Aspen Manufacturing reserves the right to make changes without notice and incurring obligation. To stay up-to-date with this product and Aspen's trusted line of coils, air handlers, and more, go to our website. © 2025 Aspen Manufacturing. All Rights Reserved

Customer Service: info@aspenmfg.com • Warranty Team: warranty@aspenmfg.com • Phone: 281.441.6500 • Toll Free: 800.423.9007 • Fax: 281.441.6510

RE(S/T) HEATING/COOLING PERFORMANCE AND ELECTRICAL DATA											
MODEL	PERFORMANCE DATA							ELECTRICAL DATA			
	NOM. COOL. BTU	ELECTRIC HEAT KIT	MIN. SPEED TAP	HEATING		TOT. AMPS		MIN. CIRCUIT AMPACITY		MAX. BREAKER OR FUSE SIZE	
				KW		A		MCA2		MFU	
				208V	240V	208V	240V	208V	240V	208V	240V
RE(S/T) 18	18,000	HTS00	-	0.0	0.0	4.0	4.0	5.0	5.0	15A	15A
		HTS03	T1	2.3	3.0	14.8	16.5	18.5	20.6	20A	25A
		HTS05	T2	3.6	4.8	21.3	24.0	26.6	30.0	30A	30A
		HTS06	T3	4.5	6.0	25.6	29.0	32.0	36.3	35A	40A
		HTS08	T4	6.0	8.0	32.8	37.3	41.1	46.7	45A	50A
		HTS10	T5	7.2	9.6	38.6	44.0	48.3	55.0	50A	60A
RE(S/T) 24	24,000	HTS00	-	0.0	0.0	4.0	4.0	5.0	5.0	15A	15A
		HTS03	T1	2.3	3.0	14.8	16.5	18.5	20.6	20A	25A
		HTS05	T2	3.6	4.8	21.3	24.0	26.6	30.0	30A	30A
		HTS06	T3	4.5	6.0	25.6	29.0	32.0	36.3	35A	40A
		HTS08	T4	6.0	8.0	32.8	37.3	41.1	46.7	45A	50A
		HTS10	T5	7.2	9.6	38.6	44.0	48.3	55.0	50A	60A
RE(S/T) 30/36	30,000	HTS00	-	0.0	0.0	4.0	4.0	5.0	5.0	15A	15A
		HTS03	T1	2.3	3.0	14.8	16.5	18.5	20.6	20A	25A
		HTS05	T2	3.6	4.8	21.3	24.0	26.6	30.0	30A	30A
		HTS06	T3	4.5	6.0	25.6	29.0	32.0	36.3	35A	40A
		HTS08	T4	6.0	8.0	32.8	37.3	41.1	46.7	45A	50A
		HTS10	T5	7.2	9.6	38.6	44.0	48.3	55.0	50A	60A

RE(S/T) BLOWER DATA									
MODEL	ECM MOTOR				CFM VS EXTERNAL STATIC*† (DRY COIL)				
	SPEED TAP	HP	FLA	VOLT	0.1	0.2	0.3	0.4	0.5
RE(S/T) 18	T5	1/2	4.0	240	900	850	805	765	650
	T4	1/2	4.0		840	805	760	705	595
	T3	1/2	4.0		805	460	705	665	565
	T2	1/2	4.0		705	665	615	580	495
	T1	1/2	4.0		655	605	555	500	425
RE(S/T) 24/25	T5	1/2	4.0	240	975	925	875	835	710
	T4	1/2	4.0		915	865	815	780	660
	T3	1/2	4.0		865	825	780	730	620
	T2	1/2	4.0		805	760	695	655	560
	T1	1/2	4.0		730	675	615	565	480
RE(S/T) 30/31/36	T5	1/2	4.0	240	1195	1140	1085	1050	890
	T4	1/2	4.0		1115	1060	1015	965	820
	T3	1/2	4.0		1000	950	895	850	725
	T2	1/2	4.0		920	860	805	745	630
	T1	1/2	4.0		815	760	700	640	545

ELECTRIC HEAT NOMENCLATURE			
HEAT KIT SERIES	POWER CONNECTION	CABINET SIZE & NOM. TON.	HEAT STRIP
H	T	S	10
ELECTRIC HEAT KIT	T = TERMINAL BLOCK	S = SMALL CABINET (18 - 37)	00 = 0 KW 06 = 6 KW 03 = 3 KW 08 = 8 KW 05 = 5 KW 10 = 10 KW

In keeping with its commitment to continuous improvement, Aspen Manufacturing reserves the right to make changes without notice and incurring obligation. To stay up-to-date with this product and Aspen's trusted line of coils, air handlers, and more, go to our website. © 2025 Aspen Manufacturing. All Rights Reserved

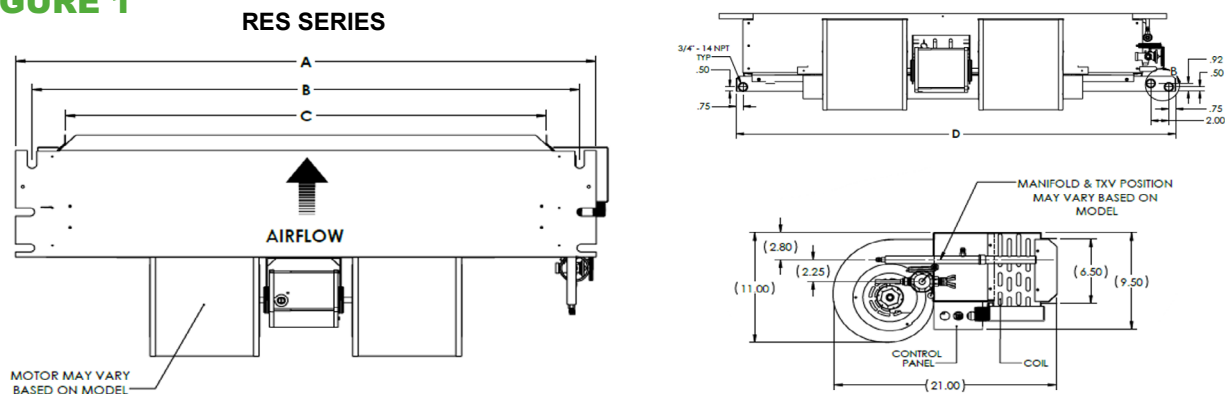
RE(S/T) AIR HANDLER CHASSIS NOMENCLATURE

BRAND	VOLTAGE	CONFIGUR.	NOM. TON.	METERING DEVICE	OPTION CODE
R	E	S/T	18	4	-000
ASPEN PRO	240V ECM MOTOR CONSTANT TORQUE ELECTRIC AIR HANDLER	S = UNCASSED T = CASSED	NOMINAL TONNAGE (MBTUH)	R410A + R22	OPTION CODE
				4 = R410A (TXV NON-BLEED AC OR HP) X = R22 (TXV NON-BLEED AC OR HP) G = R410A (PISTON) B = R22 (TXV 20% BLEED AC OR HP) F = R22 (PISTON)	
				R454B + R32	
				J = R454B (TXV NON-BLEED AC OR HP) D = R32 (TXV NON-BLEED AC OR HP) K = R454B (TXV 20% BLEED AC OR HP) M = R32 (PISTON) N = R454B (PISTON)	

RES SERIES - CHASSIS DIMENSIONS (In.) - FIGURE 1

UNIT MODEL	A	B	C	D	WEIGHT (LB)	SKID QTY.
RES18	37-1/4 [946]	34-5/8 [879]	30 [762]	36-5/8 [930]	85	5
RES24	43-1/4 [1099]	40-5/8 [1032]	36 [914]	42-5/8 [1083]	90	
RES30/36	49-1/4 [1251]	46-5/8 [1184]	42 [1067]	52 [1321]	100	

FIGURE 1

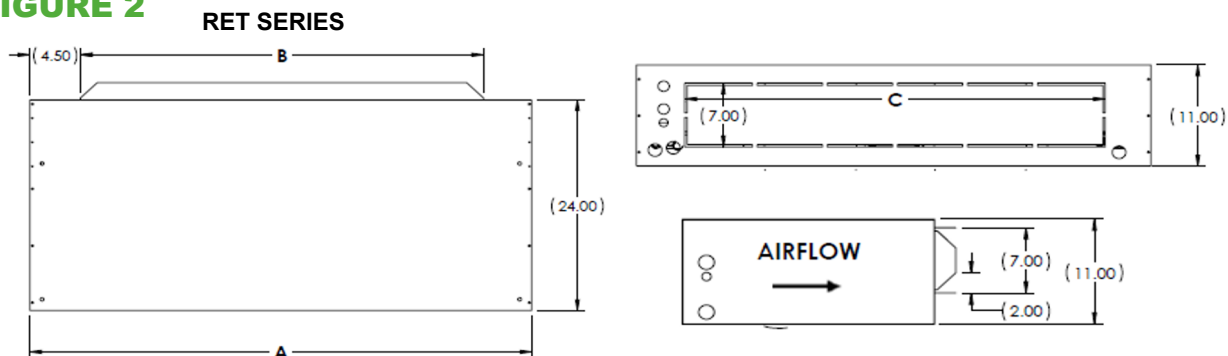


RET SERIES - ENCLOSURE DIMENSIONS (In.) - FIGURE 2

UNIT MODEL	A	B	C	WEIGHT (LB)	SKID QTY.
RET18	40 [1016]	30 [762]	30 [762]	120	5
RET24	46 [1168]	36 [914]	36 [914]	130	
RET30/36	52 [1321]	42 [1067]	42 [1067]	140	

Note: Copper stub out diameter: Suction: 3/4", Liquid: 3/8"

FIGURE 2



In keeping with its commitment to continuous improvement, Aspen Manufacturing reserves the right to make changes without notice and incurring obligation. To stay up-to-date with this product and Aspen's trusted line of coils, air handlers, and more, go to our website. © 2025 Aspen Manufacturing. All Rights Reserved

ACCESS DOOR

VERSATILITY

Equipped with hidden frame feature. Fastens to the outside wall surface and does not have to perfectly match the hole opening. Frame screws are not visible after installation. Available in either solid (S) or Louvered (L) style.

MATERIALS

Galvanized steel construction with smooth powder paint finish.

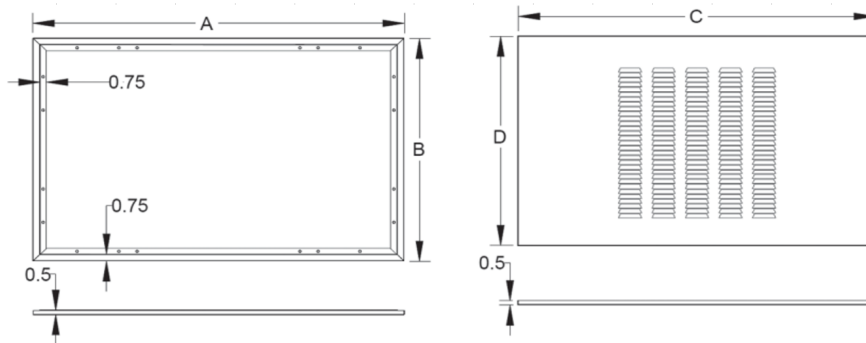
FILTER

20" x 20" x 1" field supplied.

ACCESS DOOR DIMENSIONS (In.) - FIGURE 3

PANEL MODEL	FOR USE WITH	A	B	C	D	FILTERS (QTY)
RET18	GAD-1(S/L)	43-1/2	27-1/2	41-1/2	26	1
RET24	GAD-5(S/L)	49-1/2		47-1/2		2
RET30	GAD-2(S/L)	55-1/2		53-1/2		2
RET36	GAD-2(S/L)	55-1/2		53-1/2		2

FIGURE 3



CAP KIT PART NUMBER (In.)

MODEL NUMBER	UNIT MODEL	ENCLOSURE SIZE
RET18/24	CAP-1	40X24X11
RET30/36	CAP-3	52X24X11

NOTE: CAP kit is an insulated panel that covers the entire bottom opening and is utilized for optional ducted return configuration.

In keeping with its commitment to continuous improvement, Aspen Manufacturing reserves the right to make changes without notice and incurring obligation. To stay up-to-date with this product and Aspen's trusted line of coils, air handlers, and more, go to our website. © 2025 Aspen Manufacturing. All Rights Reserved

Customer Service: info@aspenmfg.com Warranty Team: warranty@aspenmfg.com Phone: 281.441.6500 Toll Free: 800.423.9007 Fax: 281.441.6510