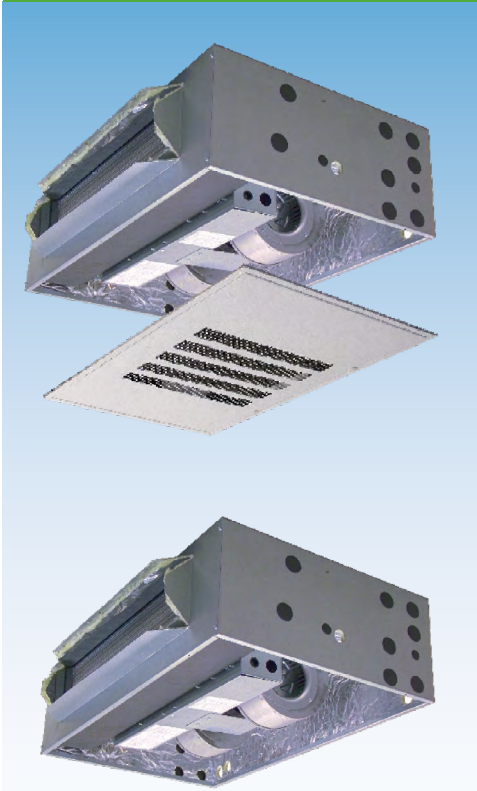


ASPENPRO CASED & UNCASD CEILING MOUNT RES/T SERIES AIR HANDLER

ELECTRIC HEAT DX COOL ECM

FEATURES, BENEFITS, DIMENSIONS, & SPECIFICATIONS



Unit shown with service panels removed.

Representative drawing only. Some models may vary in appearance. Due to continuous product improvement, specifications are subject to change without notice.

WARRANTY

**ONE YEAR LIMITED
PARTS WARRANTY**



WANT MORE INFORMATION ON THE ASPENPRO RES/T SERIES CEILING MOUNT AIR HANDLERS?

SCAN QR CODE TO VISIT THIS PRODUCT ON OUR WEBSITE

*For complete warranty details, please visit our Warranty Information tab when you visit Aspen's website.
To view this coil's product information online for the most up-to-date information scan the QR Code.*

In keeping with its commitment to continuous improvement, Aspen Manufacturing reserves the right to make changes without notice and incurring obligation. To stay up-to-date with this product and Aspen's trusted line of coils, air handlers, and more, go to our website. AP-RES-RET-Spec-2025-03

APPLICATION VERSATILITY

Built in mounting tabs for ceiling or fur-down mounting. Louvered ceiling access panel has separate frame that attaches to ceiling joists. Solid access panel available for use with end return installations. Compatible with most brands of air conditioners or heat pumps. Field convertible front and bottom return. Wall hanging bracket included standard.

MOTOR

Constant torque ECM allows motor speed control with embedded software. Motors are pre-programmed at the factory.

ELECTRONIC CONTROL BOARD

Electronic circuit board provides 30 secs ON/OFF blower time delay extracting more heat/cool from the coil.

ELECTRIC HEAT KITS

Heat kits available in 3, 5, 6, 8, & 10 KW. Models with electric heat include sequencers and temperature limit switches for safe, efficient operation. Easily accessible controls for quick service.

LOW LEAKAGE CABINET

Less than 2% air leakage from cabinet when tested in accordance with ASHRAE standard 193. Unit must be installed according to Aspen installation instructions. Sturdy, fully insulated galvanized steel cabinet with knockout for duct return.

DIRECT EXPANSION COIL

High efficiency rifled copper tube/enhanced aluminum fins provide maximum heat transfer. All coils immersion tested at 500 psi then nitrogen pressurized and factory sealed for maximum reliability. Liquid-line Schrader allows pre-installation pressure testing. Available with either orifice or TXV metering device factory installed. Field-installable bolt-on TXVs is also available. Primary & secondary condensate drain. All drain connections are 3/4" NPT. Powder-painted metal drain pan. Access door allows for coil cleaning.

- ETL listed for use with R-22, R-410A, R-454B, and R-32 when a proper metering device is used.
- In accordance with UL 60335 Refrigerant Detection Systems are field-installed on A2L refrigerant ready air handlers.



PE(S/T) HEATING/COOLING PERFORMANCE & ELECTRICAL DATA

MODEL	PERFORMANCE DATA						ELECTRICAL DATA				
	NOM. COOL. (BTU)	ELECTRIC HEAT KIT MODEL	MIN. SPEED TAP	HEATING (KW)		TOT. AMPS (A)		MIN. CIRCUIT AMPACITY (MCA2)		MAX. BREAKER OR FUSE SIZE (MFU2)	
				208V	240V	208V	240V	208V	240V	208V	240V
RE(S/T) 18	18,000	HTS00	-	0.0	0.0	4.0	4.0	5.0	5.0	15A	15A
		HTS03	T1	2.3	3.0	14.8	16.5	18.5	20.6	20A	25A
		HTS05	T2	3.6	4.8	21.3	24.0	26.6	30.0	30A	30A
		HTS06	T3	4.5	6.0	25.6	29.0	32.0	36.3	35A	40A
		HTS08	T4	6.0	8.0	32.8	37.3	41.1	46.7	45A	50A
		HTS10	T5	7.2	9.6	38.6	44.0	48.3	55.0	50A	60A
RE(S/T) 24	24,000	HTS00	-	0.0	0.0	4.0	4.0	5.0	5.0	15A	15A
		HTS03	T1	2.3	3.0	14.8	16.5	18.5	20.6	20A	25A
		HTS05	T2	3.6	4.8	21.3	24.0	26.6	30.0	30A	30A
		HTS06	T3	4.5	6.0	25.6	29.0	32.0	36.3	35A	40A
		HTS08	T4	6.0	8.0	32.8	37.3	41.1	46.7	45A	50A
		HTS10	T5	7.2	9.6	38.6	44.0	48.3	55.0	50A	60A
RE(S/T) 30/36	30,000	HTS00	-	0.0	0.0	4.0	4.0	5.0	5.0	15A	15A
		HTS03	T1	2.3	3.0	14.8	16.5	18.5	20.6	20A	25A
		HTS05	T2	3.6	4.8	21.3	24.0	26.6	30.0	30A	30A
		HTS06	T3	4.5	6.0	25.6	29.0	32.0	36.3	35A	40A
		HTS08	T4	6.0	8.0	32.8	37.3	41.1	46.7	45A	50A
		HTS10	T5	7.2	9.6	38.6	44.0	48.3	55.0	50A	60A

PE(S/T) BLOWER DATA - CONTINUED

MODEL	SPEED TAP	MOTOR			CFM VS. EXTERNAL STATIC*† (DRY COIL)				
		HP	FLA	VOLT.	0.10	0.20	0.30	0.40	0.50
RE(S/T) 18	T5	1/2	4.0	240V	900	850	805	765	650
	T4				840	805	760	705	595
	T3				805	460	705	665	565
	T2				705	665	615	580	495
	T1				655	605	555	500	425
RE(S/T) 24/25	T5				975	925	875	835	710
	T4				915	865	815	780	660
	T3				865	825	780	730	620
	T2				805	760	695	655	560
	T1				730	675	615	565	480
RE(S/T) 30/31/36	T5				1195	1140	1085	1050	890
	T4				1115	1060	1015	965	820
	T3				1000	950	895	850	725
	T2				920	860	805	745	630
	T1				815	760	700	640	545

In keeping with its commitment to continuous improvement, Aspen Manufacturing reserves the right to make changes without notice and incurring obligation. To stay up-to-date with this product and Aspen's trusted line of coils, air handlers, and more, go to our website. AP-RES-RET-Spec-2025-03



RE(S/T) AIR HANDLER CHASSIS NOMENCLATURE (ELECTRIC CEILING MOUNT)					
R	E	S/T	18	4	-000
ASPEN PRO	VOLT. 240V ECM MOTOR (CONSTANT TORQUE) ELECTRIC AIR HANDLER	CONFIGUR. S = Uncased Ceiling Mount T = Cased Ceiling Mount	NOMINAL TONNAGE (MBTUH)	A1 METERING DEVICE 4 = R410A (TXV NON-BLEED A/C or H/P) X = R22 (TXV NON-BLEED A/C or H/P) B = R22 (TXV 20% BLEED A/C or H/P) F = R22 (PISTON) G = R410A (PISTON)	OPTION CODE
				A2L METERING DEVICE J = R454B (TXV NON-BLEED A/C or H/P) K = R454B (TXV 20% BLEED A/C or H/P) D = R32 (TXV NON-BLEED A/C or H/P) M = R32 (PISTON) N = R454B (PISTON)	

ELECTRIC HEAT NOMENCLATURE			
H	T	S	10
ELECTRIC HEAT KIT	INTERRUPTION T = TERMINAL BLOCK	CABINET SIZE & NOM. TONNAGE S = SMALL CABINET (18 - 37)	HEAT STRIP
			00 = 0 KW 06 = 6 KW 03 = 3 KW 08 = 8 KW 05 = 5 KW 10 = 10 KW

ACCESS DOOR

VERSATILITY

Equipped with hidden frame feature. Fastens to the outside wall surface and does not have to perfectly match the hole opening. Frame screws are not visible after installation. Available in either solid (S) or Louvered (L) style.

MATERIALS

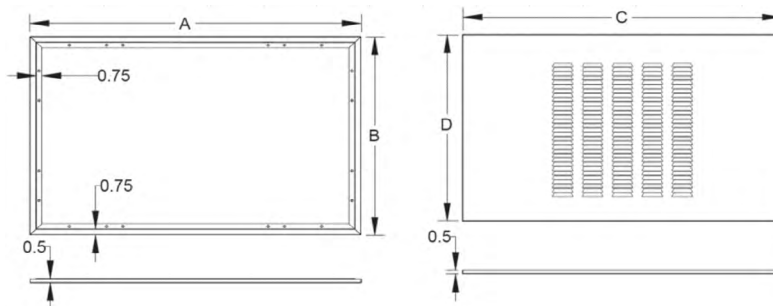
Galvanized steel construction with smooth powder paint finish.

FILTER

20" x 20" x 1" field supplied.

ACCESS DOOR DIMENSIONS (In. [mm]) - FIGURE 1						
PANEL MODEL	FOR USE WITH	A	B	C	D	FILTERS (QTY)
RET18	GAD-1(S/L)	43-1/2	27-1/2	41-1/2	26	1
RET24	GAD-5(S/L)	49-1/2		47-1/2		2
RET30	GAD-2(S/L)	55-1/2		53-1/2		2
RET36	GAD-2(S/L)	55-1/2		53-1/2		2

FIGURE 1



In keeping with its commitment to continuous improvement, Aspen Manufacturing reserves the right to make changes without notice and incurring obligation. To stay up-to-date with this product and Aspen's trusted line of coils, air handlers, and more, go to our website. AP-RES-RET-Spec-2025-03

CAP KIT PART NUMBER (In.)

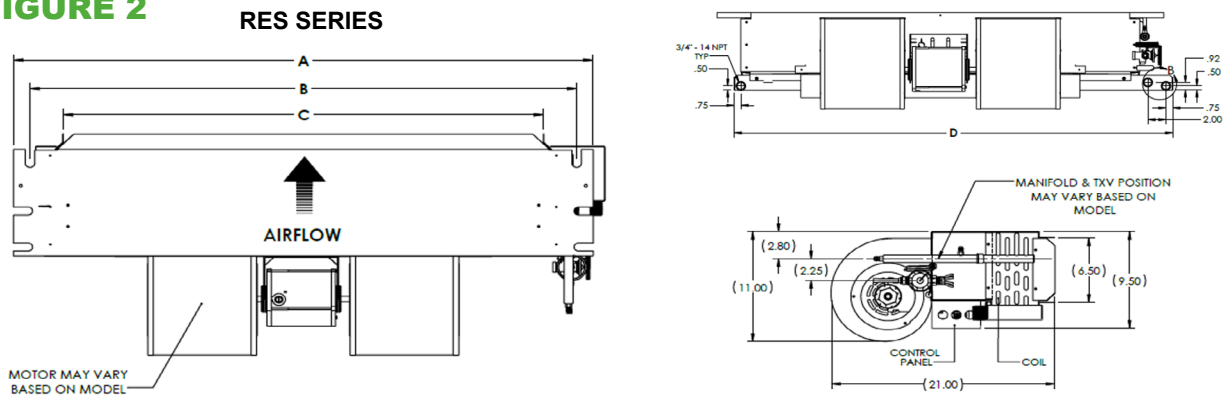
MODEL NUMBER	UNIT MODEL	ENCLOSURE SIZE
RET18/24	CAP-1	40X24X11
RET30/36	CAP-3	52X24X11

NOTE: CAP kit is an insulated panel that covers the entire bottom opening and is utilized for optional ducted return configuration.

RES SERIES - CHASSIS DIMENSIONS (In. [mm]) - FIGURE 2

UNIT MODEL	A	B	C	D	WEIGHT (LB)	SKID QTY.
RES 18	37-1/4 [946]	34-5/8 [879]	30 [762]	36-5/8 [930]	85	5
RES 24	43-1/4 [1099]	40-5/8 [1032]	36 [914]	42-5/8 [1083]	90	
RES 30/36	49-1/4 [1251]	46-5/8 [1184]	42 [1067]	52 [1321]	100	

FIGURE 2

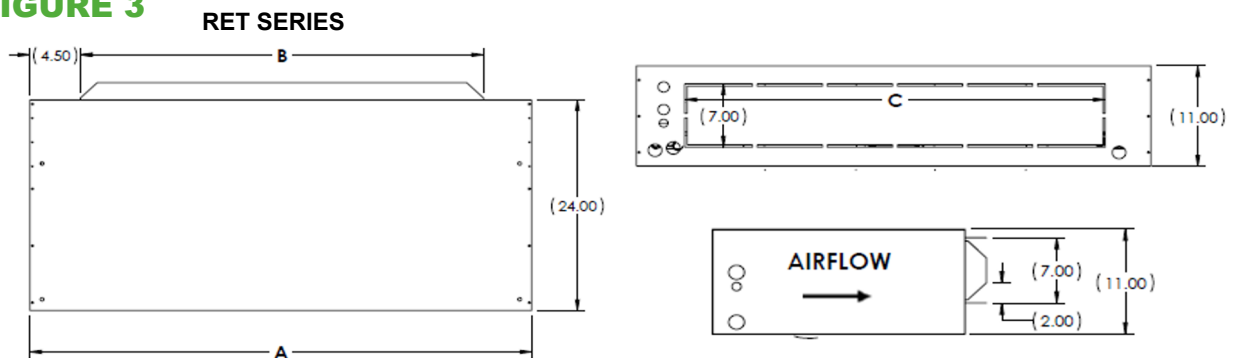


RET SERIES - ENCLOSURE DIMENSIONS (In. [mm]) - FIGURE 3

UNIT MODEL	A	B	C	WEIGHT (LB)	SKID QTY.
RET 18	40 [1016]	30 [762]	30 [762]	120	5
RET 24	46 [1168]	36 [914]	36 [914]	130	
RET 30/36	52 [1321]	42 [1067]	42 [1067]	140	

Note: Copper stub out diameter: Suction: 3/4", Liquid: 3/8"

FIGURE 3



In keeping with its commitment to continuous improvement, Aspen Manufacturing reserves the right to make changes without notice and incurring obligation. To stay up-to-date with this product and Aspen's trusted line of coils, air handlers, and more, go to our website. AP-RES-RET-Spec-2025-03