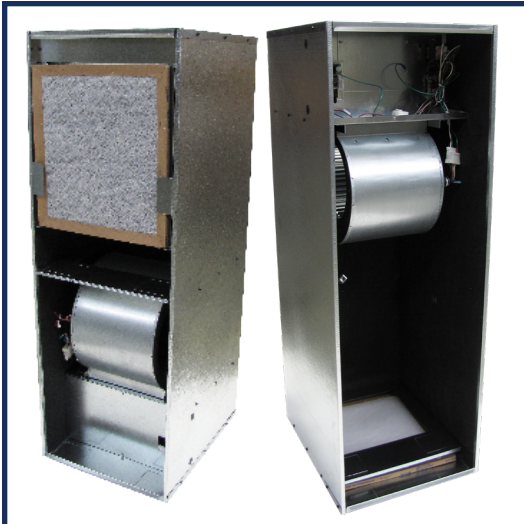


## AE(D/U) SERIES ELECTRIC HEAT

### MANUFACTURED HOUSING FURNACE



Unit shown with service panels removed.  
Representative image only. Some models may vary in appearance.

#### APPLICATION VERSATILITY

Designed for the manufactured home market with flexibility in mind. One unit for all, Downflow (Front Return) or Upflow (Bottom Return) as shipped (field-convertible for downflow-front and top return and downflow-top return). Can also be field configured to opposite configuration with the proper conversion kit. (Kits sold separately). 2 – 5 tons of cooling or heating airflow with a range of electric heat kits.

#### 240V CONSTANT TORQUE ECM MOTOR

Pre-programmed, 5-speed, 208V/240V ECM motors that ensure higher efficiency and increased energy savings by delivering constant torque during operation. Motors are pre-programmed with speeds and torques at the factory for optimal performance and reliability. Direct drive blowers circulate air quietly and efficiently. Rail mounted blowers provide easy removal for service and maintenance.

#### ELECTRONIC CIRCUIT BOARD

Electronic circuit board provides 30 secs ON/OFF blower time delay extracting more heat/cool from the coil. Automotive pull-style fuse integrated into board for easy diagnosis and replacement of fuse.

#### CABINET

Sturdy, galvanized steel cabinet with painted front panels. Cabinet fully insulated with 1/2" micro mat non-hygroscopic insulation to prevent sweating, encapsulate glass fibers, and to provide excellent R-value. Mechanical fastening ensure insulation remains in place.

#### MODULAR ELECTRIC HEAT KITS

Heat kits available with either circuit breakers or terminal blocks. Available from 3 to 25 KW. Models with electric heat include sequencers and temperature limit

switches for safe, efficient operation. Modules are easily installed in the field using molex plugs or can be ordered factory-installed. Controls are accessible from the front for easy service. Electrical connections can be made from the top or left. Disconnect does not protrude through the wall panel. Fan time delay relay standard for increased efficiency.

**WARRANTY** No hassle five-year limited parts warranty

**OPTIONS** Ask your local Aspen Sales Rep for options.

#### ONE PIECE BENEFITS & ENHANCEMENTS:

- One piece cabinet, reducing time and effort when field converting airflow orientation. Unit is convertible to either orientation with the correct door/ accessories.
- Reduced air handler weight.
- Heat kits available in both field and factory installation kits.
- AEU/D-S & AEU/D-L one-piece cabinet design fits up to a 27.5 tall coil.
- Electrical access from both sides of the cabinet.
- More room in cabinet for larger coils, as energy efficiencies increase, while maintaining overall cabinet dimensions.
- Rail-mounted blower assembly easily removed for service.
- Redesigned control panel for enhanced interface to wiring and components.
- Sloped coil shelf for optimal condensate management.

\*Constant torque does not change as ESP increases/decreases

### MEET ASPEN'S NEWEST GAME-CHANGER

#### UNIVERSAL A2L REFRIGERANT TECHNOLOGY FOR R32 & R454B SYSTEMS



#### IDEAL FOR USE WITH ASPEN AIR HANDLERS, AS WELL AS CASED & UNCASSED COILS!

Versa Pro coils are easily configurable for use with either R32 or R454B refrigerant with proper metering device. Utilizing universal Refrigerant Detection Systems (RDS) to ensure regulatory compliance.

#### OTHER POPULAR CUSTOM OPTIONS:

- Refrigerant Detection System (RDS) kit factory-installed.
- Factory or field-installed TXV available.

#### DOWNFLOW KIT OPTIONS:

##### METAL DRAIN PANS

- 16" DWNFLWM-16
- 18" DWNFLWM-18

##### PLASTIC DRAIN PANS

- DWNFLWP

AED-AEU-SS-EF-002-A



In keeping with its commitment to continuous improvement, Aspen Manufacturing reserves the right to make changes without notice and incurring obligation. To stay up-to-date with this product and Aspen's trusted line of coils, air handlers, and more, go to our website. © 2025 Aspen Manufacturing. All Rights Reserved

Phone: 281.441.6500 Toll Free: 800.423.9007 Fax: 281.441.6510 Customer Service: info@aspenmfg.com Warranty Team: warranty@aspenmfg.com

| HEATING/COOLING PERFORMANCE & ELECTRICAL DATA |                  |                   |           |         |         |            |         |                       |         |                           |         |
|---|------------------|-------------------|-----------|---------|---------|------------|---------|-----------------------|---------|---------------------------|---------|
| MODEL   | PERFORMANCE DATA |                   |           |         |         |            |         | ELECTRICAL DATA       |         |                           |         |
|   | NOM. COOLING     | ELECTRIC HEAT KIT | SPEED TAP | HEATING |         | TOTAL AMPS |         | MIN. CIRCUIT AMPACITY |         | MAX. BREAKER OR FUSE SIZE |         |
|   |                  |                   |           | KW      |         | A          |         | MCA                   |         |                           |         |
|   | BTU              |                   |           | 208V    | 240V    | 208V       | 240V    | 208V                  | 240V    | 208V                      | 240V    |
| AE*S  | 18,000-36,000    | F(C,T)LS00        | -         | 0.0     | 0.0     | 3.6        | 3.6     | 4.5                   | 4.5     | 15A                       | 15A     |
|   |                  | F(C,T)LS03        | T1        | 2.3     | 3       | 14.4       | 16.1    | 18                    | 20.1    | 20A                       | 25A     |
|   |                  | F(C,T)LS05        | T2        | 3.6     | 4.8     | 20.9       | 23.6    | 26.1                  | 29.5    | 30A                       | 30A     |
|   |                  | F(C,T)LS06        | T2        | 4.5     | 6       | 25.2       | 28.6    | 31.5                  | 35.8    | 35A                       | 40A     |
|   |                  | F(C,T)LS08        | T2        | 6       | 8       | 32.4       | 36.9    | 40.6                  | 46.2    | 45A                       | 50A     |
|   |                  | F(C,T)LS10        | T2        | 7.2     | 9.6     | 38.2       | 43.6    | 47.8                  | 54.5    | 50A                       | 60A     |
|   |                  | F(C,T)LS15        | T3        | 7.2/3.6 | 9.6/4.8 | 38.2/17.3  | 43.6/20 | 47.8/21.6             | 54.5/25 | 50A/25A                   | 60A/25A |
| AE*L  | 36,000-60,000    | F(C,T)LL00        | -         | 0.0     | 0.0     | 7          | 7       | 9.5                   | 9.5     | 15A                       | 15A     |
|   |                  | F(C,T)LL03        | T1        | 2.3     | 3       | 17.8       | 19.5    | 23                    | 25.1    | 25A                       | 30A     |
|   |                  | F(C,T)LL05        | T1        | 3.6     | 4.8     | 24.3       | 27      | 31.1                  | 34.5    | 35A                       | 35A     |
|   |                  | F(C,T)LL06        | T1        | 4.5     | 6       | 28.6       | 32      | 36.5                  | 40      | 35A                       | 45A     |
|   |                  | F(C,T)LL08        | T1        | 6       | 8       | 35.8       | 40.3    | 45.6                  | 51.2    | 50A                       | 60A     |
|   |                  | F(C,T)LL10        | T2        | 7.2     | 9.6     | 41.6       | 47      | 52.8                  | 59.5    | 60A                       | 60A     |
|   |                  | F(C,T)LL15        | T2        | 7.2/3.6 | 9.6/4.8 | 41.6/17.3  | 47/20   | 52.8/21.6             | 59.5/25 | 60A/25A                   | 60A/25A |
|   |                  | F(C,T)LL20        | T2        | 7.2/7.2 | 9.6/9.6 | 41.6/34.6  | 47/40   | 52.8/43.3             | 59.5/50 | 60A/45A                   | 60A/50A |

| BLOWER DATA |                |     |     |                                   |      |      |      |      |      |      |      |      |      |
|-------------|----------------|-----|-----|-----------------------------------|------|------|------|------|------|------|------|------|------|
| MODEL       | 240V ECM MOTOR |     |     | CFM VS EXTERNAL STATIC (DRY COIL) |      |      |      |      |      |      |      |      |      |
|             | SPEED TAP      | HP  | AMP | 0.1                               | 0.2  | 0.3  | 0.4  | 0.5  | 0.6  | 0.7  | 0.8  | 0.9  | 1.0  |
| AE*-S       | T1             | 1/2 | 3.6 | 710                               | 650  | 590  | 530  | 470  | 460  | 410  | 340  | -    | -    |
|             | T2             |     |     | 770                               | 720  | 670  | 630  | 570  | 510  | 450  | 420  | 370  | 340  |
|             | T3             |     |     | 900                               | 850  | 810  | 800  | 705  | 660  | 610  | 560  | 510  | 480  |
|             | T4             |     |     | 1130                              | 1100 | 1060 | 1020 | 980  | 940  | 900  | 850  | 810  | 760  |
|             | T5             |     |     | 1310                              | 1280 | 1240 | 1200 | 1165 | 1130 | 1080 | 1050 | 1010 | 970  |
| AE*-L       | T1             | 1   | 7.0 | 1130                              | 1100 | 1060 | 1020 | 965  | 900  | 860  | 810  | 750  | 690  |
|             | T2             |     |     | 1340                              | 1300 | 1265 | 1230 | 1200 | 1155 | 1115 | 1050 | 1020 | 975  |
|             | T3             |     |     | 1490                              | 1450 | 1420 | 1400 | 1365 | 1330 | 1300 | 1270 | 1235 | 1170 |
|             | T4             |     |     | 1670                              | 1640 | 1610 | 1585 | 1550 | 1520 | 1500 | 1460 | 1430 | 1400 |
|             | T5             |     |     | 1850                              | 1825 | 1800 | 1770 | 1750 | 1720 | 1690 | 1670 | 1640 | 1620 |

| ELECTRIC HEAT KIT NOMENCLATURE |   |                          |   |
|--------------------------------|---|--------------------------|---|
| HEAT KIT SERIES                | POWER CONNECTION                          | CABINET SIZE & NOM. TON. | HEAT STRIP  |
| F                              | C   | L*                       | 00  |
| ELECTRIC HEAT                  | C = CIRCUIT BREAKER<br>T = TERMINAL BLOCK | LS = 24-36               | 00 = 0 KW    08 = 8 KW<br>03 = 3 KW    10 = 10 KW<br>05 = 5 KW    15 = 15 KW<br>06 = 6 KW               |
|                                |   | LL = 36-60               | 00 = 0 KW    08 = 8 KW<br>03 = 3 KW    10 = 10 KW<br>05 = 5 KW    15 = 15 KW<br>06 = 6 KW    20 = 20 KW |

In keeping with its commitment to continuous improvement, Aspen Manufacturing reserves the right to make changes without notice and incurring obligation. To stay up-to-date with this product and Aspen's trusted line of coils, air handlers, and more, go to our website. © 2025 Aspen Manufacturing. All Rights Reserved

Phone: 281.441.6500 Toll Free: 800.423.9007 Fax: 281.441.6510 Customer Service: info@aspenmfg.com Warranty Team: warranty@aspenmfg.com

## AIR HANDLER CHASSIS NOMENCLATURE

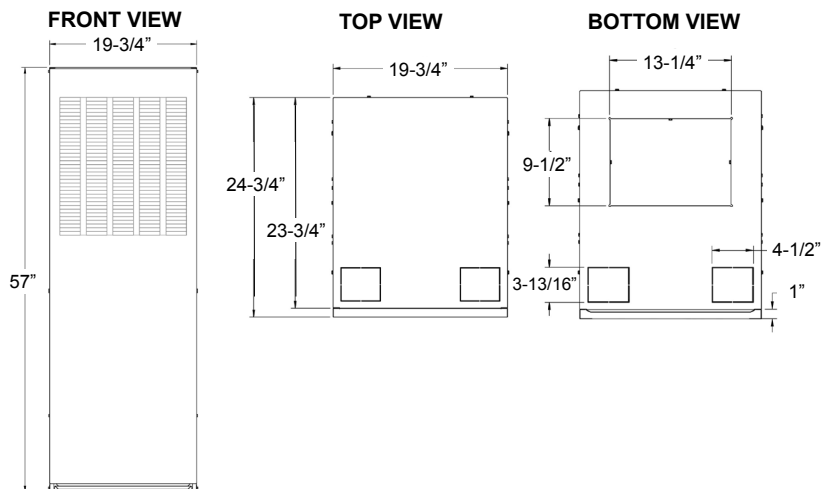
| CONFIGURATION                     | NOM. TONNAGE (MBTUH)                                     | OPTION CODE |
|-----------------------------------|--|-------------|
| AE*                               | S or L   | -003        |
| U = UPFLOW / BOTTOM RETURN        | <b>S (SMALL) = 18 - 36</b><br><b>L (LARGE) = 36 - 60</b> | -003        |
| D = DOWNFLOW / FRONT RETURN       |  | -003        |
| D = DOWNFLOW / FRONT & TOP RETURN |  | -004        |
| D = DOWNFLOW / TOP RETURN         |  | -005        |

## ONE PIECE WRAPPER - CONFIGURATION TABLE

| DEFAULT   |           |             |          | CONVERTIBLE TO                            | KIT NEEDED F/<br>CONVERSION |
|-----------|-----------|-------------|----------|---|-----------------------------|
| MODEL     | CONFIGUR. | RETURN      | DOOR     |   |                             |
| AED-S-003 | DOWNFLOW  | FRONT       | LOUVERED | DOWNFLOW/FRONT & TOP RETURN – LOUVER DOOR | AEXK-01                     |
| AED-L-003 |           |             |          | DOWNFLOW/TOP RETURN – SOLID DOOR          | AEXK-02                     |
|           |           |             |          | UPFLOW/BOTTOM RETURN – SOLID DOOR         | AEXK-02                     |
| AEU-S-003 | UPFLOW    | BOTTOM      | SOLID    | DOWNFLOW/FRONT RETURN – LOUVER DOOR       | AEXK-03                     |
| AEU-L-003 |           |             |          | DOWNFLOW/FRONT & TOP RETURN – LOUVER DOOR | AEXK-03                     |
|           |           |             |          | DOWNFLOW TOP RETURN – SOLID DOOR          | AEXK-01                     |
| AED-S-004 | DOWNFLOW  | FRONT & TOP | LOUVERED | DOWNFLOW/FRONT RETURN – LOUVER DOOR       | AEXK-04                     |
| AED-L-004 |           |             |          | DOWNFLOW/TOP RETURN – SOLID DOOR          | AEXK-05                     |
|           |           |             |          | UPFLOW/BOTTOM RETURN – SOLID DOOR         | AEXK-05                     |
| AED-S-005 | DOWNFLOW  | TOP         | SOLID    | DOWNFLOW/FRONT RETURN – LOUVER DOOR       | AEXK-03                     |
| AED-L-005 |           |             |          | DOWNFLOW/FRONT & TOP RETURN – LOUVER DOOR | AEXK-03                     |
|           |           |             |          | UPFLOW/BOTTOM RETURN – SOLID DOOR         | -                           |

## SHIPPING SPECIFICATIONS

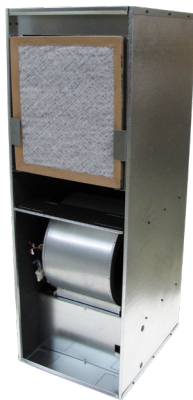
| MODEL     | WEIGHT (LB) | SKID QTY |
|-----------|-------------|----------|
| AEU-S-003 | 111         | 4        |
| AEU-L-003 | 123         |          |
| AED-S-003 | 116         |          |
| AED-L-003 | 128         |          |
| AED-S-004 | 114         |          |
| AED-L-004 | 126         |          |
| AED-S-005 | 114         |          |
| AED-L-005 | 126         |          |



FILTER SIZE: 18x20x1 for all configurations.

In keeping with its commitment to continuous improvement, Aspen Manufacturing reserves the right to make changes without notice and incurring obligation. To stay up-to-date with this product and Aspen's trusted line of coils, air handlers, and more, go to our website. © 2025 Aspen Manufacturing. All Rights Reserved

Phone: 281.441.6500 Toll Free: 800.423.9007 Fax: 281.441.6510 Customer Service: info@aspenmfg.com Warranty Team: warranty@aspenmfg.com



**AED**  
(Downflow)



**AEU**  
(Upflow)



**Solid panel**  
option



**Louvered panel**  
option

## HELPFUL LINKS



### VIEW PRODUCT ONLINE

*For full warranty terms and conditions, please refer to the Warranty Information section on Aspen's official website.*



### VIEW INSTALLATION GUIDE

*For Important Safety Instructions, general Information, conversion steps, wiring diagrams, and more.*

In keeping with its commitment to continuous improvement, Aspen Manufacturing reserves the right to make changes without notice and incurring obligation. To stay up-to-date with this product and Aspen's trusted line of coils, air handlers, and more, go to our website. © 2025 Aspen Manufacturing. All Rights Reserved

Phone: 281.441.6500 Toll Free: 800.423.9007 Fax: 281.441.6510 Customer Service: [info@aspenmfg.com](mailto:info@aspenmfg.com) Warranty Team: [warranty@aspenmfg.com](mailto:warranty@aspenmfg.com)