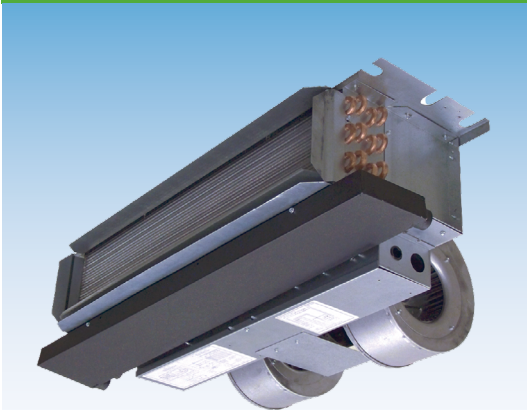


PES/T SERIES CEILING MOUNT

CASED & UNCASD ECM ELECTRIC HEAT DX COOL AIR HANDLER



Representative image only. Some models may vary in appearance.

APPLICATION VERSATILITY

Built in mounting tabs for ceiling or fur-down mounting. Louvered ceiling access panel has separate frame that attaches to ceiling joists. Solid access panel available for use with end return installations. Compatible with most brands of air conditioners or heat pumps. Field convertible front and bottom return. Wall hanging bracket included standard.

- A2L refrigerants require a Refrigerant Detection System (RDS) for compliance. In accordance to UL 60335 Refrigerant Detection Systems are factory-installed on A2L refrigerant ready air handlers.
- ETL listed for R22 and 410A. ETL listed for R454B and R32 with (RDS) Refrigerant Detection System.

MOTOR

Constant torque ECM allows motor speed control with embedded software. Motors are pre-programmed at the factory.

ELECTRONIC CONTROL BOARD

Electronic circuit board provides 30 secs ON/OFF blower time delay extracting more heat/cool from the coil.

ELECTRIC HEAT KITS

Heat kits available in 3, 5, 6, 8, & 10 KW. Models with electric heat include sequencers and temperature limit switches for safe, efficient operation. Easily accessible controls for quick service.

LOW LEAKAGE CABINET

Less than 2% air leakage from cabinet when tested in accordance with ASHRAE standard 193. Unit must be installed according to Aspen installation instructions. Sturdy, fully insulated galvanized steel cabinet with knock-out for duct return.

DIRECT EXPANSION COIL

High efficiency rifled copper tube/enhanced aluminum fins provide maximum heat transfer. All coils immersion tested at 500 psi, followed by nitrogen pressurization and factory sealing to ensure optimal system integrity and long-term reliability. Liquid-line Schrader allows pre-installation pressure assurance testing. Available with either orifice or TXV metering device factory installed. Field-installable bolt-on TXVs is also available. Primary & secondary condensate drain. All drain connections are 3/4" NPT. Powder-painted metal drain pan. Access door allows for coil cleaning.

PES-PET-SS-AH-020-A

HELPFUL LINKS



VIEW PRODUCT ONLINE

For full warranty terms and conditions, please refer to the Warranty Information section on Aspen's official website.



AHRI QUICK MATCH TOOL

Identify the correct AHRI-certified match for any Aspen coil, air handler, or Aspen PRO air handler. Available on the Resources page.



In keeping with its commitment to continuous improvement, Aspen Manufacturing reserves the right to make changes without notice and incurring obligation. To stay up-to-date with this product and Aspen's trusted line of coils, air handlers, and more, go to our website. © 2025 Aspen Manufacturing. All Rights Reserved

Customer Service: info@aspenmfg.com • Warranty Team: warranty@aspenmfg.com • Phone: 281.441.6500 • Toll Free: 800.423.9007 • Fax: 281.441.6510

PE(S/T) HEATING/COOLING PERFORMANCE & ELECTRICAL DATA											
MODEL	PERFORMANCE DATA							ELECTRICAL DATA			
	NOM. COOL. BTU	ELECTRIC HEAT KIT	MIN. SPEED TAP	HEATING		TOT. AMPS		MIN. CIRCUIT AMPACITY		MAX. BREAKER OR FUSE SIZE	
				KW		A		MCA2		MFU	
				208V	240V	208V	240V	208V	240V	208V	240V
PE(S/T) 23/27	18,000	HTS00	-	0.0	0.0	4.0	4.0	5.0	5.0	15A	15A
		HTS03	T1	2.3	3.0	14.8	16.5	18.5	20.6	20A	25A
		HTS05	T2	3.6	4.8	21.3	24.0	26.6	30.0	30A	30A
		HTS06	T3	4.5	6.0	25.6	29.0	32.0	36.3	35A	40A
		HTS08	T4	6.0	8.0	32.8	37.3	41.1	46.7	45A	50A
		HTS10	T5	7.2	9.6	38.6	44.0	48.3	55.0	50A	60A
PE(S/T) 26/28	24,000	HTS00	-	0.0	0.0	4.0	4.0	5.0	5.0	15A	15A
		HTS03	T1	2.3	3.0	14.8	16.5	18.5	20.6	20A	25A
		HTS05	T2	3.6	4.8	21.3	24.0	26.6	30.0	30A	30A
		HTS06	T3	4.5	6.0	25.6	29.0	32.0	36.3	35A	40A
		HTS08	T4	6.0	8.0	32.8	37.3	41.1	46.7	45A	50A
		HTS10	T5	7.2	9.6	38.6	44.0	48.3	55.0	50A	60A
PE(S/T) 29/33/35	30,000	HTS00	-	0.0	0.0	4.0	4.0	5.0	5.0	15A	15A
		HTS03	T1	2.3	3.0	14.8	16.5	18.5	20.6	20A	25A
		HTS05	T2	3.6	4.8	21.3	24.0	26.6	30.0	30A	30A
		HTS06	T3	4.5	6.0	25.6	29.0	32.0	36.3	35A	40A
		HTS08	T4	6.0	8.0	32.8	37.3	41.1	46.7	45A	50A
		HTS10	T5	7.2	9.6	38.6	44.0	48.3	55.0	50A	60A
PE(S/T) 34/38	36,000	HTS00	-	0.0	0.0	4.0	4.0	5.0	5.0	15A	15A
		HTS03	T1	2.3	3.0	14.8	16.5	18.5	20.6	20A	25A
		HTS05	T2	3.6	4.8	21.3	24.0	26.6	30.0	30A	30A
		HTS06	T3	4.5	6.0	25.6	29.0	32.0	36.3	35A	40A
		HTS08	T4	6.0	8.0	32.8	37.3	41.1	46.7	45A	50A
		HTS10	T5	7.2	9.6	38.6	44.0	48.3	55.0	50A	60A

PE(S/T) BLOWER DATA									
MODEL	SPEED TAP	MOTOR			CFM VS. EXTERNAL STATIC (DRY COIL)				
		HP	FLA	VOLT	0.1	0.2	0.3	0.4	0.5
PE(S/T) 23/26	T5	1/2	4.0	240	900	850	805	765	650
	T4	1/2	4.0		840	805	760	705	595
	T3	1/2	4.0		805	460	705	665	565
	T2	1/2	4.0		705	665	615	580	495
	T1	1/2	4.0		655	605	555	500	425
PE(S/T) 27	T5	1/2	4.0	240	975	925	875	835	710
	T4	1/2	4.0		915	865	815	780	660
	T3	1/2	4.0		865	825	780	730	620
	T2	1/2	4.0		805	760	695	655	560
	T1	1/2	4.0		730	675	615	565	480
PE(S/T) 28	T5	1/2	4.0	240	1180	1130	1070	1015	860
	T4	1/2	4.0		1115	1060	1015	950	810
	T3	1/2	4.0		1015	950	900	860	730
	T2	1/2	4.0		910	850	795	745	630
	T1	1/2	4.0		815	745	685	640	454
PE(S/T) 29/34	T5	1/2	4.0	240	1195	1140	1085	1050	890
	T4	1/2	4.0		1115	1060	1015	965	820
	T3	1/2	4.0		1000	950	895	850	725
	T2	1/2	4.0		920	860	805	745	630
	T1	1/2	4.0		815	760	700	640	545
PE(S/T) 33	T5	1/2	4.0	240	1220	1165	1115	1060	900
	T4	1/2	4.0		1140	1100	1060	1000	850
	T3	1/2	4.0		1010	965	910	860	730
	T2	1/2	4.0		885	860	775	735	625
	T1	1/2	4.0		815	765	705	665	565
PE(S/T) 35/38	T5	1/2	4.0	240	1305	1255	1195	1130	960
	T4	1/2	4.0		1230	1165	1115	1070	910
	T3	1/2	4.0		1130	1085	1040	1000	850
	T2	1/2	4.0		1045	980	935	900	765
	T1	1/2	4.0		935	885	810	775	650

ELECTRIC HEAT NOMENCLATURE

HEAT KIT SERIES	POWER CONNECTION	CABINET SIZE & NOM. TON.	HEAT STRIP
H	T	S	10
ELECTRIC HEAT	INTERRUPTION T = TERMINAL BLOCK	S = SMALL CABINET (18-37)	00 = 0 KW 06 = 6 KW 03 = 3 KW 08 = 8 KW 05 = 5 KW 10 = 10 KW

PE(S/T) AIR HANDLER CHASSIS NOMENCLATURE

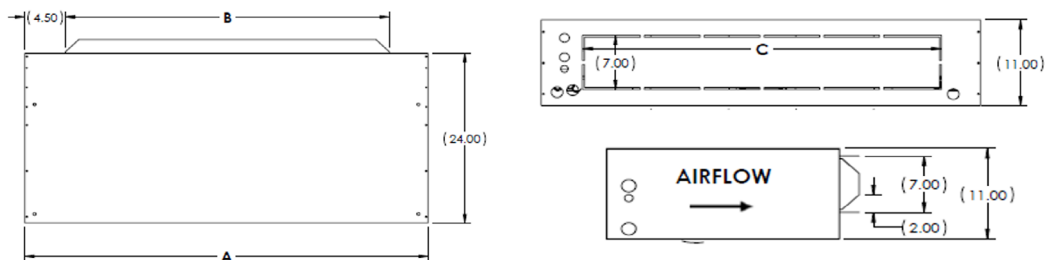
BRAND	VOLTAGE	CONFIGUR.	NOM. TON.	METERING DEVICE	OPTION CODE
P	E	S/T	23	4	-000
ASPEN PRO	240V ECM MOTOR CONSTANT TORQUE ELECTRIC AIR HANDLER	S = Uncased T = Cased	NOMINAL TONNAGE (MBTUH)	R410A + R22	OPTION CODE
				4 = R410A (TXV NON-BLEED AC OR HP) X = R22 (TXV NON-BLEED AC OR HP) G = R410A (PISTON) B = R22 (TXV 20% BLEED AC OR HP) F = R22 (PISTON)	
				R454B + R32	
				J = R454B (TXV NON-BLEED AC OR HP) D = R32 (TXV NON-BLEED AC OR HP) K = R454B (TXV 20% BLEED AC OR HP) M = R32 (PISTON) N = R454B (PISTON)	

PET SERIES - CHASSIS DIMENSIONS (In.) - FIGURE 1

UNIT MODEL	A	B	C	WEIGHT (LB)	SKID QTY.
PET23/26	40 [1016]	30 [762]	30 [762]	135	5
PET27	46 [1168]	36 [914]	36 [914]	145	
PET28/29/34	52 [1321]	42 [1067]	42 [1067]	155	
PET33/35/38	60 [1524]	48 [1219]	48 [1219]	175	

FIGURE 1

(PET 20-25)



Copper stub out diameter: Suction: 3/4", Liquid: 3/8"; Knockout for ducted return (Ducted return requires remote filter grille (field supplied) and non-louvered panel)

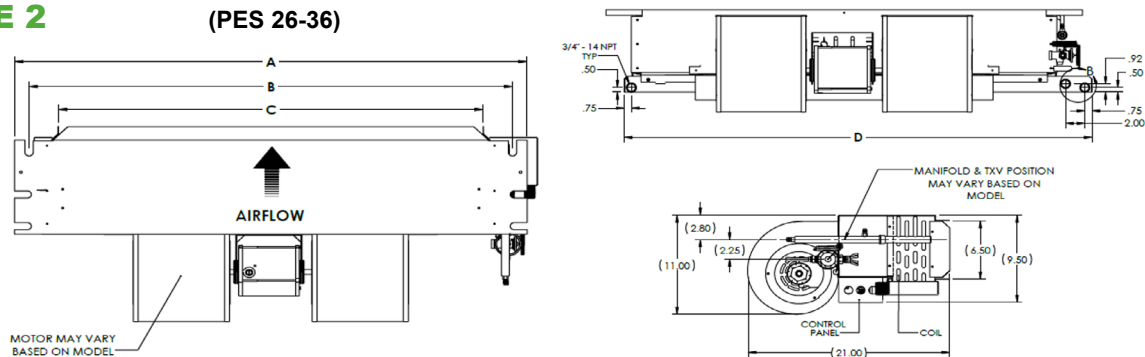
PES SERIES - ENCLOSURE DIMENSIONS (In.) - FIGURE 2

UNIT MODEL	A	B	C	WEIGHT (LB)	SKID QTY.
PES 23/26	37-1/4	34-5/8	30	135	8
PES 27	43-1/4	40-5/8	36	145	5
PES 28/29/34	49-1/4	46-5/8	42	155	4
PES 33/35/38	56-1/4	53-5/8	48	175	5

Note: Copper stub out diameter: Suction: 3/4", Liquid: 3/8"

FIGURE 2

(PES 26-36)



In keeping with its commitment to continuous improvement, Aspen Manufacturing reserves the right to make changes without notice and incurring obligation. To stay up-to-date with this product and Aspen's trusted line of coils, air handlers, and more, go to our website. © 2025 Aspen Manufacturing. All Rights Reserved

ACCESS DOOR

VERSATILITY

Equipped with hidden frame feature. Fastens to the outside wall surface and does not have to perfectly match the hole opening. Frame screws are not visible after installation. Available in either solid (S) or Louvered (L) style.

MATERIALS

Galvanized steel construction with smooth powder paint finish.

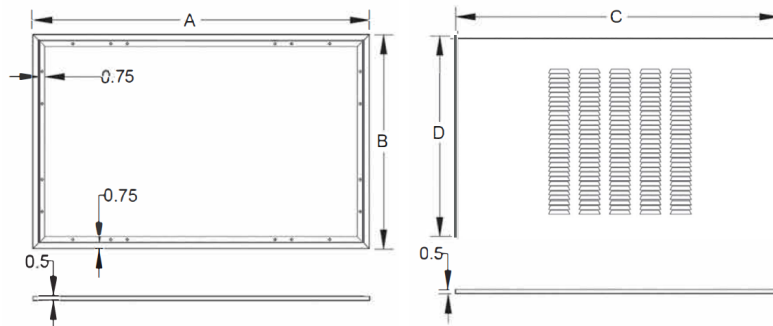
FILTER

20" x 20" x 1" field supplied.

ACCESS DOOR DIMENSIONS (In.) - FIGURE 3

PANEL MODEL	FOR USE WITH	A	B	C	D	FILTERS (QTY)
PE(S/T)23/26	GAD-1(S/L)	43-1/2	27-1/2	41-1/2	26	1
PE(S/T)27	GAD-5(S/L)	49-1/2		47-1/2		2
PE(S/T)28/29/34	GAD-2(S/L)	55-1/2		53-1/2		2
PE(S/T)33/35/38	GAD-6(S/L)	63-1/2		61-1/2		2

FIGURE 3



CAP KIT PART NUMBER (In.)

MODEL NUMBER	UNIT MODEL	ENCLOSURE SIZE
PET23/26	CAP-1	40X24X11
PET27	CAP-2	46X24X11
PET28/29/33/34	CAP-3	52X24X11
PET35/38	CAP-4	60X24X11

NOTE: CAP kit is an insulated panel that covers the entire bottom opening and is utilized for optional ducted return configuration.

In keeping with its commitment to continuous improvement, Aspen Manufacturing reserves the right to make changes without notice and incurring obligation. To stay up-to-date with this product and Aspen's trusted line of coils, air handlers, and more, go to our website. © 2025 Aspen Manufacturing. All Rights Reserved

Customer Service: info@aspenmfg.com Warranty Team: warranty@aspenmfg.com Phone: 281.441.6500 Toll Free: 800.423.9007 Fax: 281.441.6510